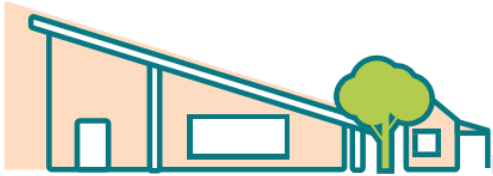


Modbury North Kindergarten



2025 annual report to the Community

Modbury North Kindergarten

Modbury North Kindergarten number: 4635

Partnership: Modbury



Preschool director:

Freda Lam

Date of endorsement:

24/04/2026



Government of South Australia
Department for Education

Context Statement

Information about Modbury North Kindergarten is available on the centres website, as well as the Australian Children’s Education and Care Quality Authority (ACECQA) website.

Governing Council Report

As Chairperson of the Governing Council in 2025, I am proud to reflect on a year of strong collaboration, growth and community connection within our Kindy.

The Governing Council plays an important role in supporting the leadership team, contributing to decision-making and helping to shape a positive and inclusive environment for all children and families. Throughout 2025, our council worked closely with staff to ensure the Kindy continued to deliver high-quality early learning experiences while maintaining a welcoming and supportive community.

One of our key achievements this year was strengthening communication and engagement with families. Through events such as family lunches and parent morning teas, along with regular updates and open dialogue, we encouraged greater participation and connection across the Kindy community. It was fantastic to see so many families involved.

We also focused on maintaining and improving the Kindy environment. With the support of staff and volunteers, we contributed to enhancements in outdoor spaces, ensuring they remain safe, engaging and reflective of the natural play-based learning approach valued by the centre.

Financial oversight and governance remained a priority, with the council working diligently to manage budgets responsibly and support resource allocation where it matters most—directly benefiting the children’s learning and development.

Importantly, I would like to acknowledge the dedication and professionalism of the Kindy staff. Their passion, care and commitment to each child’s learning journey are what truly make this community special. I would also like to thank fellow council members for their time, ideas and willingness to contribute throughout the year.

It has been a privilege to serve as Chairperson, and I am grateful for the opportunity to support such a wonderful community. I look forward to seeing the Kindy continue to thrive in the years ahead.

Preschool Attendance

	Term 1	Term 3
2022 centre	83.3%	76.9%
2023 centre	84%	85.8%
2024 centre	86.8%	84.5%
2025 centre	85.5%	80.8%

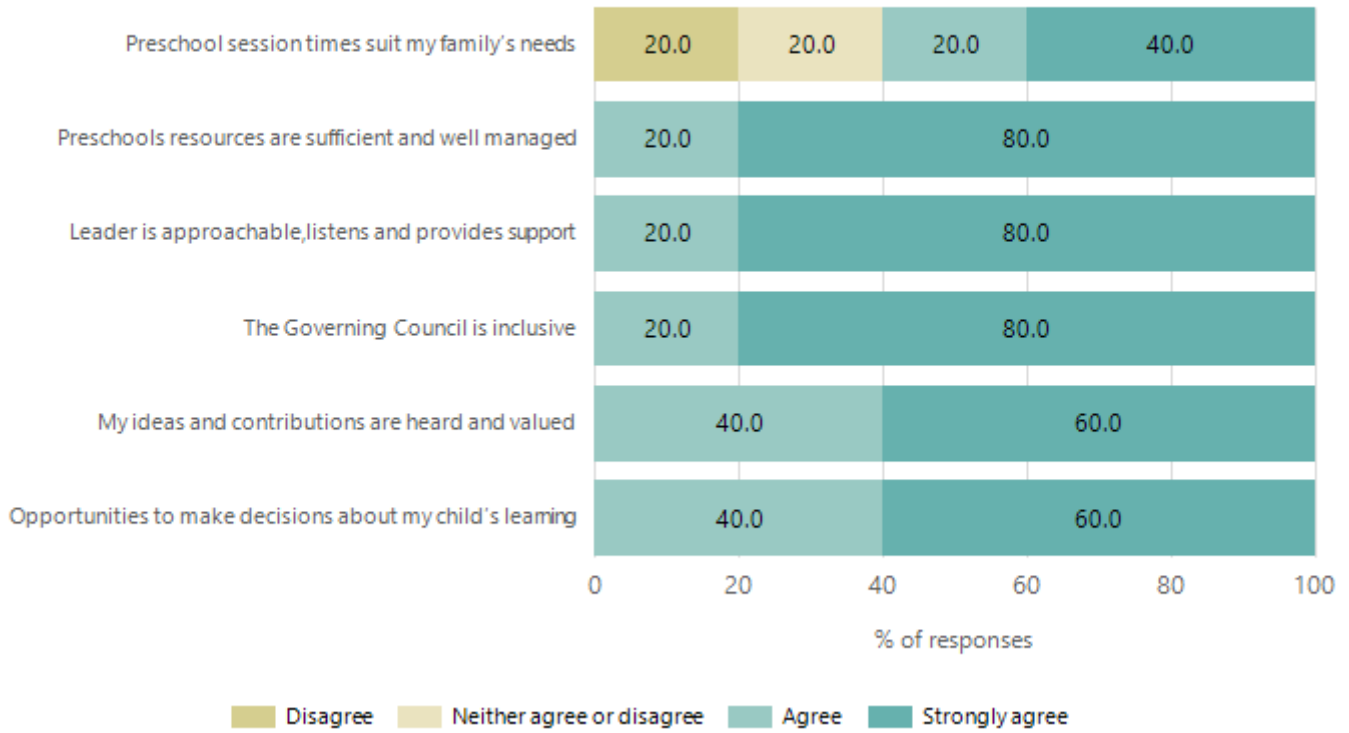
Based on preschool sessions attended during a two-week reference period in Term 1 and Term 3. The table represents the proportion of hours attended out of total hours enrolled (booked). Data Source: Department for Education attendance data.

Attendance Comment

In South Australia, preschool attendance is not compulsory, but it is strongly encouraged. Preschool gives children the best opportunity to develop skills, which prepare them for school. These benefits include establishing positive routines and habits, friendships and connections as well as developing communication, problem-solving and creative skills.

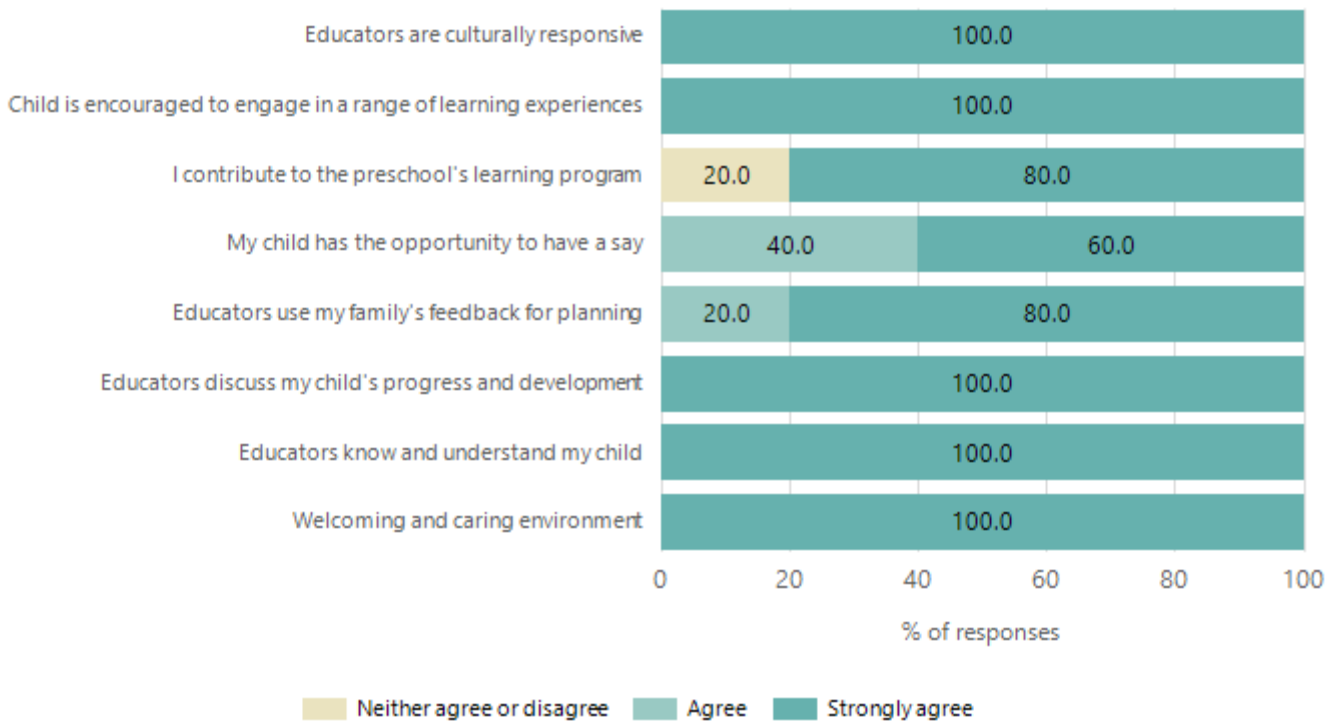
Preschool Family Opinion Survey

Governance, Leadership and Management



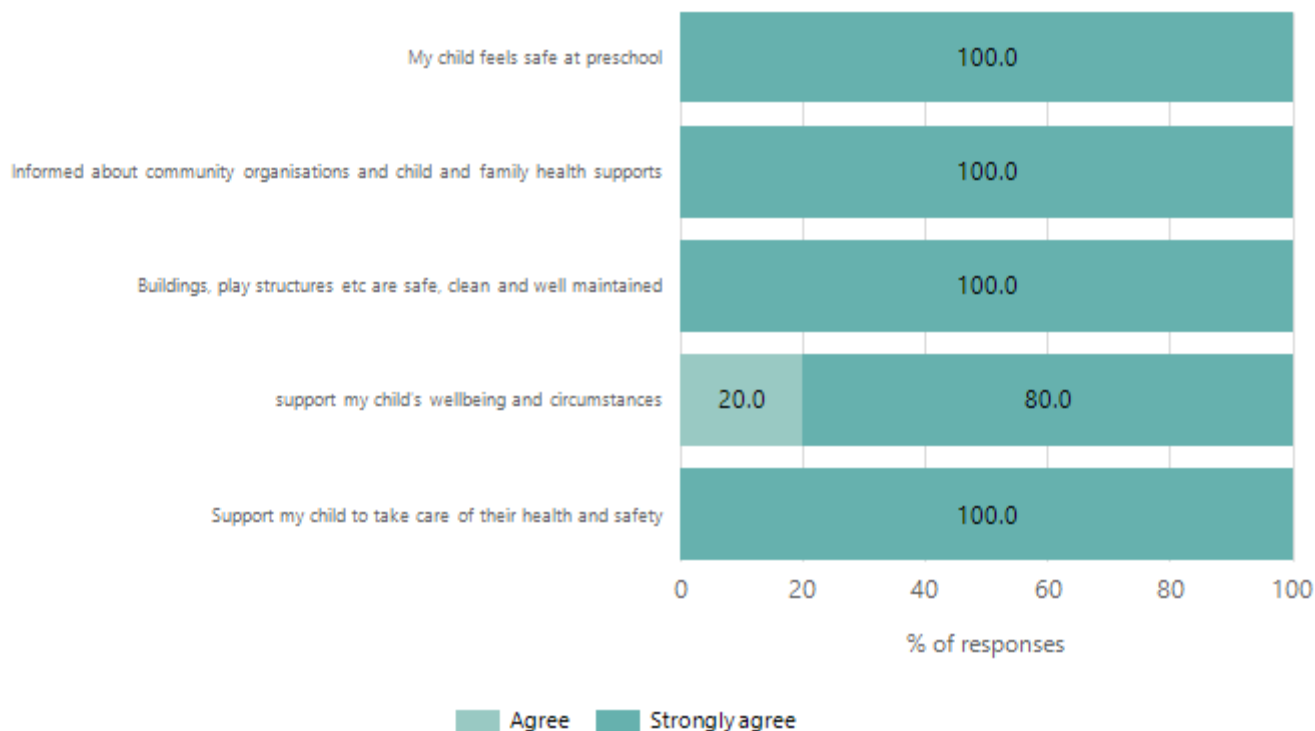
Data Source: 2025 Department for Education Preschool Family Opinions Survey, Term 3 2025.

Quality of Teaching and Learning



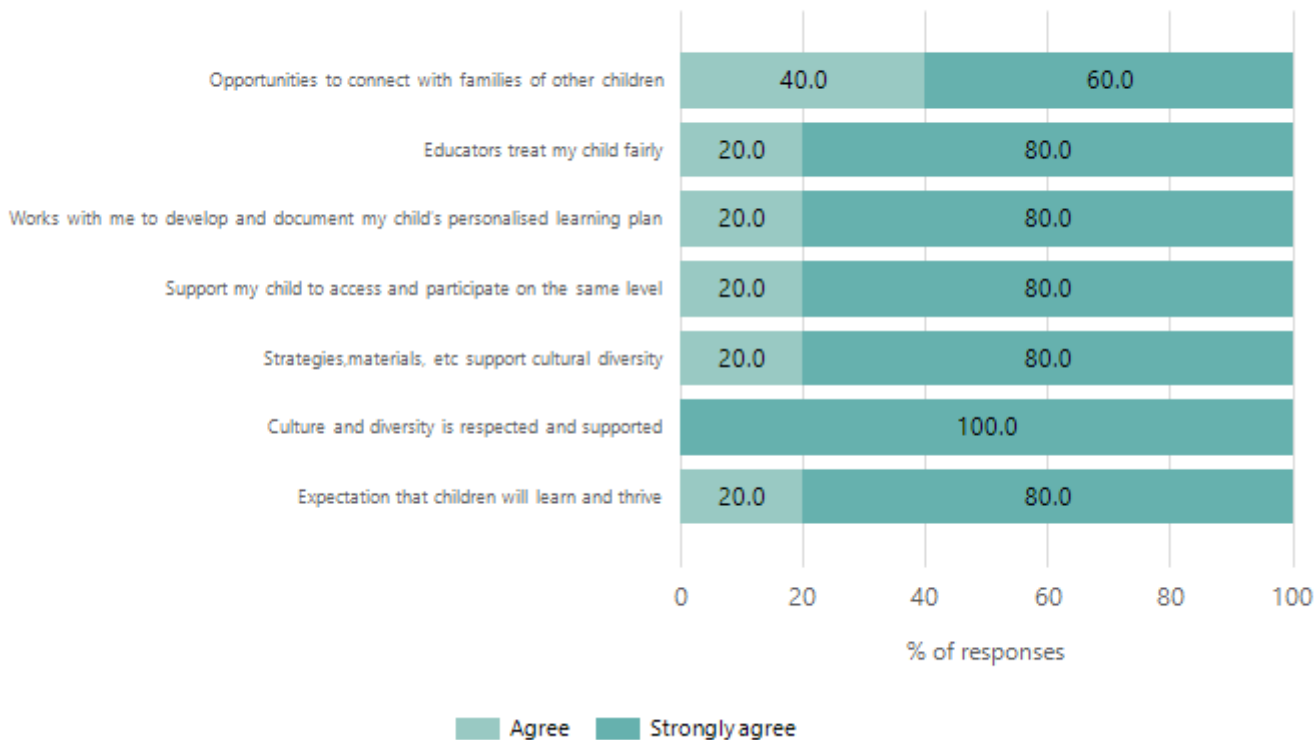
Data Source: 2025 Department for Education Preschool Family Opinions Survey, Term 3 2025.

Safety, Health and Wellbeing



Data Source: 2025 Department for Education Preschool Family Opinions Survey, Term 3 2025.

Support and Inclusion



Data Source: 2025 Department for Education Preschool Family Opinions Survey, Term 3 2025.

Destination Schools

Feeder Schools (Site number - Name)	2023	2024	2025
0923 - Stradbroke School	3.0%		
1134 - East Para Primary School	10.6%	3.2%	4.8%
1210 - Modbury West School	24.2%	9.5%	21.0%
8364 - St Paul's College	4.6%	3.2%	3.2%
8419 - Good Shepherd Lutheran School - Para Vista	4.6%		
9999 - Unknown	47.0%	79.4%	62.9%

Note: The data is collected in term 3. It does not reflect actual schools enrolled in by existing preschool children. A blank cell indicates there was no data for students enrolled.

Data Source: Department for Education Destination Data Report, 2025.

Highest Qualifications held by the teaching workforce and workforce composition

All teachers at this school are qualified and registered with the SA Teachers Registration Board.

Qualification Level	Number of Qualifications
Bachelor's degrees or Diplomas	2
Postgraduate Qualifications	2

Data Source: Data extracted from Mandatory Workforce Information Collections as on the last pay date of June 2025. As self-reported by staff in the system.

Please note: Data includes staff who are Actively employed and on extended paid leave. Please note only the highest qualification of the Teaching staff is reported. Excludes any number of other certifications earned.

Workforce composition including indigenous staff

	Teaching Staff		Non-Teaching Staff	
	Indigenous	Non-Indigenous	Indigenous	Non-Indigenous
Full-Time Equivalents	0.0	3.5	0.9	0.4
Persons	0.0	4.0	1.0	1.0

Data Source: Data extracted from Mandatory Workforce Information Collection as on the last pay date of June 2025.

Please note: Data includes staff who are actively employed and on extended paid leave. "Indigenous category" is self-reported by staff in the system.

Financial Statement

Funding Source	Amount
Grants: State	\$567,312.77
Grants: Commonwealth	
Parent Contributions	\$17,990.50
Fund Raising	
Other	\$3,988.59

Data Source: School supplied data.